

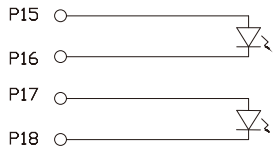
FEATURES

- ◎ ETHERNET TRANSFORMER ACCORDING TO IEEE 802.3at (PoE PLUS) FOR PSE APPLICATIONS
- ◎ MEETS THE STANDARDS OF EIA-364, FCC PART 68, AND IEC 60512-1-100.
- ◎ CAPABLE OF 10/100/1000 BASE-TX
- ◎ SUPPORT POWER UP TO 30W
- ◎ FULLY PARAMETRIC, HI-POT, AND DC TESTED MODULES WITH EXCELLENT EMI FILTERING
- ◎ COMPLIANCE TO J-STD-020 : LEVEL 1, NO SENSITIVE MOISTURE

ELECTRICAL CHARACTERISTICS AT +25°C (UNLESS OTHERWISE SPECIFIED)

- DCL : 350uH MINIMUM AT 100MHz, 100mV, 8mA DC BIAS
- INSERTION LOSS : -1.2dB MAXIMUM AT 100KHZ-100MHz
- RETURN LOSS : -18dB MINIMUM AT 1-30 MHz
-13dB MINIMUM AT 30-60 MHz
-12dB MINIMUM AT 60-80 MHz
- COMMON MODE REJECTION : -30dB MINIMUM AT 1-100 MHz
- CROSS TALK : -30dB MINIMUM AT 1-100 MHz
- ISOLATION VOLTAGE : 1,500 V/AC (INPUT OR OUTPUT)
- STORAGE TEMPERATURE : -40°C TO +85°C
- OPERATING TEMPERATURE : -40°C TO +85°C
- ACCORDING TO IEEE 802.3 FOR PSE (30WATTS) APPLICATIONS
DC CURRENT CAPABILITY UP TO 720mA AT 57VDC (CONTINUOUS)

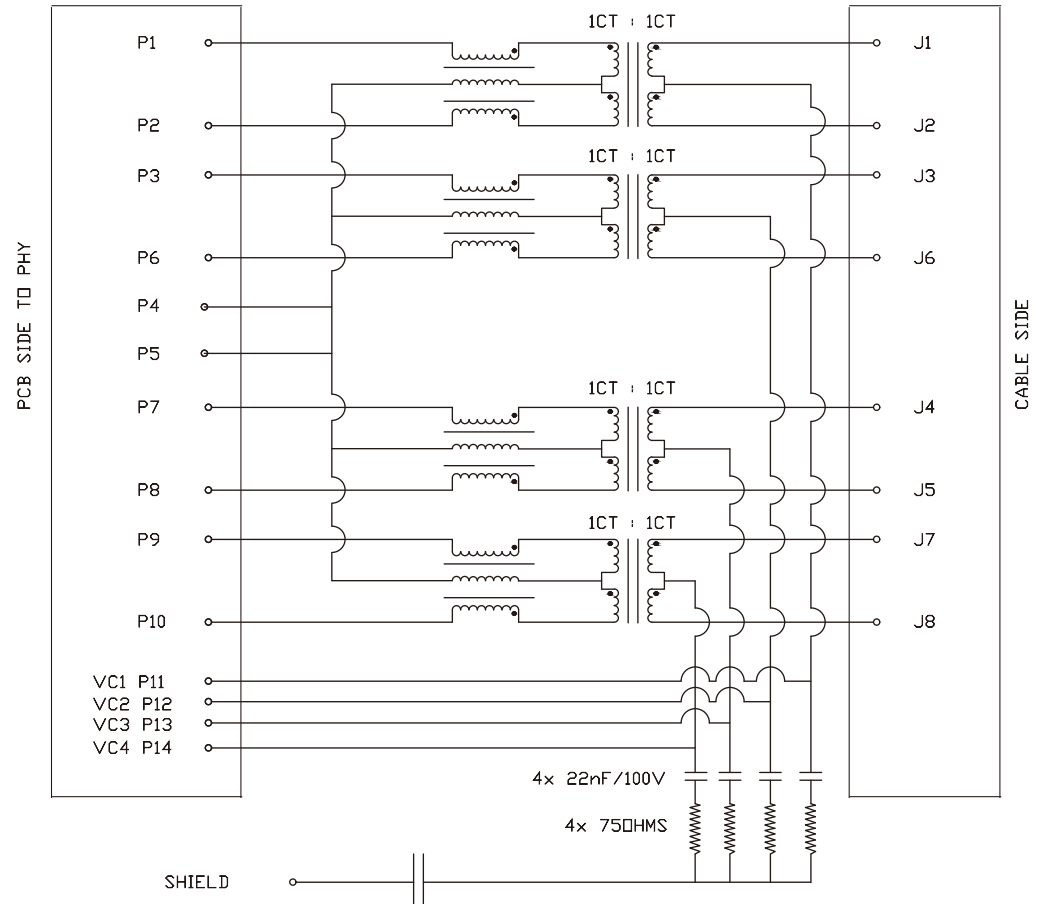
LED SPECIFICATION



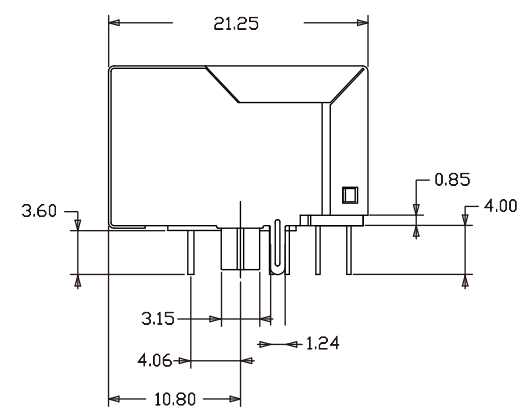
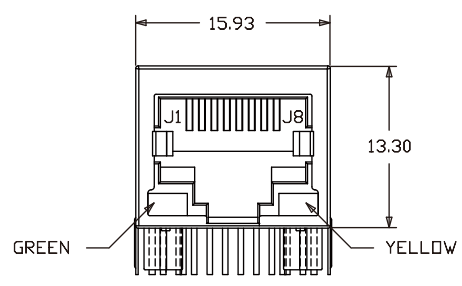
PIN	GREEN	PIN	YELLOW
P15	+	P17	+
P16	-	P18	-

RoHS COMPLIANT AND MEET THE REQUIREMENTS DEFINED UNDER DIRECTIVE 2011/65/EU OF THE EUROPEAN PARLIAMENT AND OF THE COUNCIL OF JUNE 8TH, 2011 ON THE RESTRICTION OF THE USE OF CERTAIN HAZARDOUS SUBSTANCES IN ELECTRICAL AND ELECTRONIC EQUIPMENT (EEE).

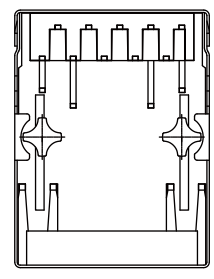
SCHEMATIC



QUALITY CONTROL LINE DIMENSIONS SHALL MARKED THE SYMBOL AS RoHS COMPLIANT HTP LEAD-FREE	METRIC		WIROS ELECTRONICS <small>INTERNATIONAL COMPANY LIMITED</small>	
	DRAWER LUCY, L		<small>NOTICE OF PROPRIETARY PROPERTY</small> <small>THIS DRAWING CONTAINS INFORMATION THAT IS PROPRIETARY TO</small> <small>WIROS ELECTRONICS INTERNATIONAL COMPANY LIMITED</small> <small>AND SHOULD NOT BE USED WITHOUT WRITTEN CONSENT FROM WIROS.</small>	
	APPROVER YUCAI, Y		TITLE LED(G)(Y) 1GIP THT16 POE+ MODULAR ETHERNET RECEPTACLE CONNECTOR	
	<small>DIMENSIONS ARE IN MILLIMETERS</small> <small>TOLERANCES</small> 0~10 ±0.15 10~20 ±0.25 20~40 ±0.25 40~70 ±0.30 70+ ±0.40 ANGLES ±3° <small>DO NOT SCALE DRAWINGS</small>		<small>PRODUCT NUMBER</small> SPCA1-51*T016PD-F11S40N	
<small>THIRD ANGLE PROJECTION</small> 		<small>SIZE</small> A4	<small>SCALE</small> 1 : 1	<small>SHEET</small> 1 OF 3



< TOP VIEW >



< BOTTOM VIEW >

NOTES < UNLESS OTHERWISE SPECIFIED >

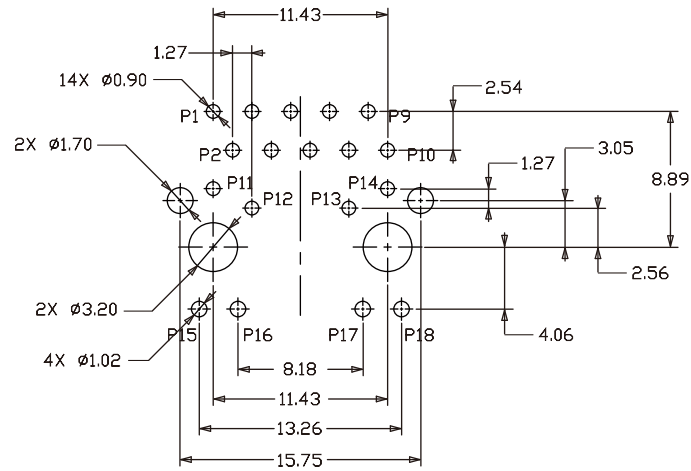
- HOUSING : THERMOPLASTIC NYLON 6/6, UL94V-0, BLACK
- CONTACT : PHOSPHOR BRONZE T=0.35mm WITH SELECTIVE GOLD PLATING ON CONTACT AREA
TIN UNDER-PLATED OVERALL
- SHIELD : COPPER ALLOY WITH NICKEL PLATED OVERALL
- LED TERMINAL(S) : PHOSPHOR BRONZE, TIN PLATED
- DURABILITY : 750 MATING/UNMATING CYCLES MINIMUM
- WAVE SOLDERING PEAK TEMPERATURE : 260±5°C FOR 3-5 SECONDS MAXIMUM

MARKING

- LOGO : "WIROS"
- MPN : SPCA1
- DATECODE : YYWW

QUALITY CONTROL LINE DIMENSIONS SHALL MARKED THE SYMBOL AS RoHS COMPLIANT HLF LEAD FREE P/B	METRIC	WIROS ELECTRONICS <small>INTERNATIONAL COMPANY LIMITED</small>		
	DRAWER LUCY, L	NOTICE OF PROPRIETARY PROPERTY THIS DRAWING CONTAINS INFORMATION THAT IS PROPRIETARY TO WIROS ELECTRONICS INTERNATIONAL COMPANY LIMITED AND SHOULD NOT BE USED WITHOUT WRITTEN CONSENT FROM WIROS.		
	APPROVER YUCAI, Y			
	DIMENSIONS ARE IN MILLIMETERS TOLERANCES 0~10 ±0.15 10~20 ±0.25 20~40 ±0.25 40~70 ±0.30 70+ ±0.40 ANGLES ±3° DO NOT SCALE DRAWINGS	TITLE LED(G)(Y) 1G1P THT16 POE+ MODULAR ETHERNET RECEPTACLE CONNECTOR		
SIZE A4	THIRD ANGLE PROJECTION 	PRODUCT NUMBER SPCA1-51*T016PD-F11S40N	SCALE 1 : 1	SHEET 2 OF 3

RECOMMENDED PRINTED CIRCUIT BOARD (PCB) LAYOUT



(COMPONENT SIDE VIEW)
TOLERANCE ±0.05mm MAXIMUM

ORDER GUIDE

SPCA1-51 T016PD-F11S40N

PLATING METHOD

- 1~GOLD 3μ ON CONTACT AREA
- 2~GOLD 6μ ON CONTACT AREA
- 4~GOLD 15μ ON CONTACT AREA
- 6~GOLD 30μ ON CONTACT AREA
-

REV. DATE	DESCRIPTION
-----------	-------------

QUALITY CONTROL LINE DIMENSIONAL TOLERANCE SHALL BE MARKED THE SYMBOL AS ▲ <input checked="" type="checkbox"/> RoHS COMPLIANT <input type="checkbox"/> HfP COMPLIANT <input checked="" type="checkbox"/> LEAD-FREE	METRIC		WIROS ELECTRONICS INTERNATIONAL COMPANY LIMITED		
	DRAWER		LUCY, L		
	APPROVER		YUCAI, Y		
	DIMENSIONS ARE IN MILLIMETERS TOLERANCES		NOTICE OF PROPRIETARY PROPERTY THIS DRAWING CONTAINS INFORMATION THAT IS PROPRIETARY TO WIROS ELECTRONICS INTERNATIONAL COMPANY LIMITED AND SHOULD NOT BE USED WITHOUT WRITTEN CONSENT FROM WIROS.		
	0~10 ±0.15 10~20 ±0.25 20~40 ±0.25 40~70 ±0.30 70+ ±0.40 ANGLES ±3° DO NOT SCALE DRAWINGS		TITLE		
THIRD ANGLE PROJECTION		PRODUCT NUMBER			
SIZE	REV.	SCALE		SHEET 3 OF 3	
A4		1 : 1			