

* NOTES * (UNLESS OTHERWISE SPECIFIED)

MECHANICAL

- ① HOUSING : THERMOPLASTIC NYLON 6/6, UL94V-0, BLACK
- ② CONTACT : BRASS, 0.64mm SQ, TIN PLATED OVER NICKEL

SPECIFICATION

- ① CURRENT RATING : 2.5 TO 8.5 AMPHERES AC/DC
(DEPENDS ON WIRE SIZE)
- ② VOLTAGE RATING : 250V AC/DC
- ③ CONTACT RESISTANCE : 10 MILLIOHMS MAX.
- ④ INSULATION RESISTANCE : 1000 MEGOHMS MIN.
- ⑤ WITHSTANDING VOLTAGE : 1000 VAC/MINUTE
- ⑥ WAVE-SOLDERING PEAK-TEMPERATURE : 260±5°C FOR 3±0.5 SECONDS
- ⑦ OPERATING TEMPERATURE : -40°C TO +105°C
- ⑧ APPLICABLE WIRE : AWG.#18 TO AWG.#30

*** THIS IS A RoHS-2 RECOGNIZED PRODUCT ***
 *** MATES WITH PWB30 SERIES HOUSING AND TERMINALS ***

ORDER OPTIONS)

RWB30-51 P0 Q1

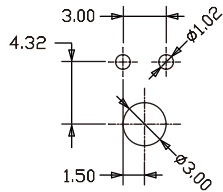
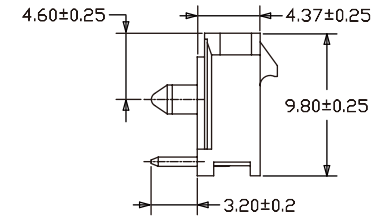
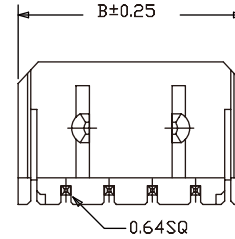
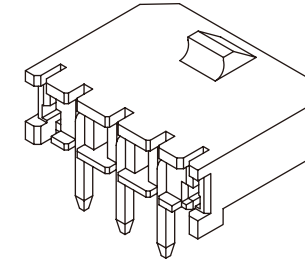
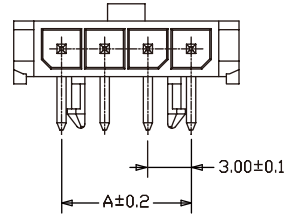
NUMBER OF POSITIONS
 FROM 02 TO 12 POSITIONS AVAILABLE

PLATING METHOD

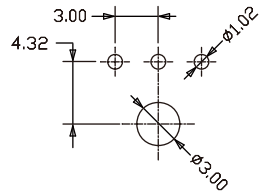
J~TIN 80~100μ OVER NICKEL OVERALL
 A~GOLD 0.2~1μ OVERALL

DIMENSION TABLE

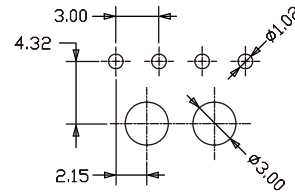
PART NUMBER	A	B
RWB30-51×P002Q1	3.00	9.65
RWB30-51×P003Q1	6.00	12.65
RWB30-51×P004Q1	9.00	15.65
RWB30-51×P005Q1	12.00	18.65
RWB30-51×P006Q1	15.00	21.65
RWB30-51×P007Q1	18.00	24.65
RWB30-51×P008Q1	21.00	27.65
RWB30-51×P009Q1	24.00	30.65
RWB30-51×P010Q1	27.00	33.65
RWB30-51×P011Q1	30.00	36.65
RWB30-51×P012Q1	33.00	39.65



2 POSITIONS



3 POSITIONS



4 TO 12 POSITIONS

RECOMMENDED P.C.B. LAYOUT
 (TOP VIEW)
 TOLERANCE ±0.05mm

METRIC		WIROS ELECTRONICS INTERNATIONAL COMPANY LIMITED	
DRAWER	HENRY, W	NOTICE OF PROPRIETARY PROPERTY THIS DRAWING CONTAINS INFORMATION THAT IS PROPRIETARY TO WIROS ELECTRONICS INTERNATIONAL COMPANY LIMITED AND SHOULD NOT BE USED WITHOUT WRITTEN CONSENT FROM WIROS.	
APPROVER	CR, S		
DIMENSIONS ARE IN MILLIMETERS TOLERANCES		TITLE	
X.	----	3.00 WIRE TO BOARD WITH LOCK THRU HOLE CONNECTOR	
X.X	±0.20		
X.XX	±0.10		
X.XXX	±0.05		
ANGLES	±3°		
DO NOT SCALE DRAWINGS		PRODUCT NUMBER	
THIRD ANGLE PROJECTION		RWB30-51×P0××Q1	
SIZE	A4	SCALE	NONE
REV.		SHEET	1 OF 1