

\* NOTES \* (UNLESS OTHERWISE SPECIFIED)

MECHANICAL

- ① HOUSING : THERMOPLASTIC LCP, UL94V-0, COLOR BEIGE
- ② CONTACT : PHOSPHOR BRONZE, TIN PLATED OVER NICKEL
- ③ SOLDER PEG : PHOSPHOR BRONZE, TIN PLATED OVER NICKEL

SPECIFICATION

- ① CURRENT RATING : 2.5 AMPHERES MAX.
- ② VOLTAGE RATING : 125V MAX.
- ③ CONTACT RESISTANCE : 20 MILLIOHMS MAX.
- ④ INSULATION RESISTANCE : 100 MEGOHMS MIN.
- ⑤ DIELECTRIC STRENGTH : 250V AC/MINUTE
- ⑥ SOLDERABILITY : 260±5°C FOR 3±0.5 SECONDS
- ⑦ OPERATING TEMPERATURE : -40°C TO +105°C
- ⑧ APPLICABLE WIRES : AWG.#28~#32

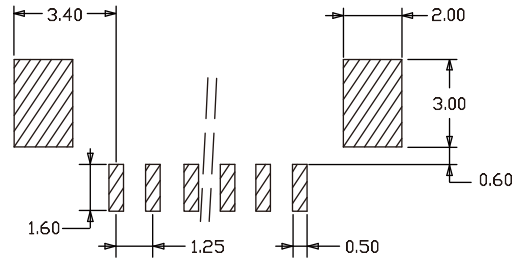
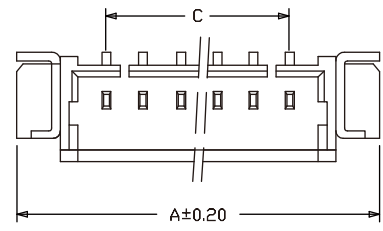
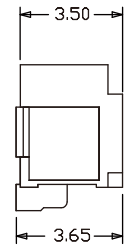
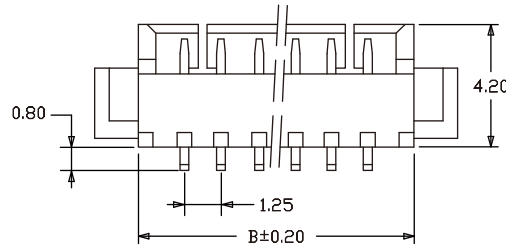
\*\*\* THIS IS A RoHS-2 RECOGNIZED PRODUCT  
 \*\*\* MATES WITH PWB16 SERIES HOUSING AND CRIMP TERMINALS

ORDER OPTION(S)

RWB16-12KR0 \*\* IB

CIRCUIT NUMBER  
 FROM 02 TO 20 PINS AVAILABLE

CIRCUITS	ORDER NO.	A	B	C
02	RWB16-12KR002IB	7.40	4.50	1.25
03	RWB16-12KR003IB	8.65	5.75	2.50
04	RWB16-12KR004IB	9.90	7.00	3.75
05	RWB16-12KR005IB	11.15	8.25	5.00
06	RWB16-12KR006IB	12.40	9.50	6.25
07	RWB16-12KR007IB	13.65	10.75	7.50
08	RWB16-12KR008IB	18.65	12.00	8.75
09	RWB16-12KR009IB	19.90	13.25	10.00
10	RWB16-12KR010IB	17.40	14.50	11.25
11	RWB16-12KR011IB	18.65	15.75	12.50
12	RWB16-12KR012IB	19.90	17.00	13.75
13	RWB16-12KR013IB	21.15	18.25	15.00
14	RWB16-12KR014IB	22.40	19.50	16.25
15	RWB16-12KR015IB	23.65	20.75	17.50
16	RWB16-12KR016IB	24.90	22.00	18.75
17	RWB16-12KR017IB	26.15	23.25	20.00
18	RWB16-12KR018IB	27.40	24.50	21.25
19	RWB16-12KR019IB	28.65	25.75	22.50
20	RWB16-12KR020IB	29.90	27.00	23.75



RECOMMENDED P.C.B. LAYOUT  
 (TOP VIEW)  
 TOLERANCE ±0.05mm

<b>METRIC</b>		<b>WIROS ELECTRONICS</b> <small>INTERNATIONAL COMPANY LIMITED</small>											
<small>QUALITY CONTROL LINE DIMENSIONS WILL MARKED THE SYMBOL AS</small> <small>RoHS COMPLIANT</small> <small>HIP HIGHER PRECISION</small> <small>LEAD FREE</small>		<small>NOTICE OF PROPRIETARY PROPERTY</small> <small>THIS DRAWING CONTAINS INFORMATION THAT IS PROPRIETARY TO WIROS ELECTRONICS INTERNATIONAL COMPANY LIMITED AND SHOULD NOT BE USED WITHOUT WRITTEN CONSENT FROM WIROS.</small>											
DRAWER <b>VIVIAN, W</b> APPROVER <b>STAR, H</b>		<small>DIMENSIONS ARE IN MILLIMETERS TOLERANCES</small> <table style="width: 100%;"> <tr><td>X.</td><td>----</td></tr> <tr><td>X.X</td><td>----</td></tr> <tr><td>X.XX</td><td>±0.20</td></tr> <tr><td>X.XXX</td><td>----</td></tr> <tr><td>ANGLES</td><td>±3°</td></tr> </table>		X.	----	X.X	----	X.XX	±0.20	X.XXX	----	ANGLES	±3°
X.	----												
X.X	----												
X.XX	±0.20												
X.XXX	----												
ANGLES	±3°												
<small>DO NOT SCALE DRAWINGS</small> THIRD ANGLE PROJECTION		<small>TITLE</small> <b>1.25 WIRE TO BOARD R/A SMD CONNECTOR</b>											
<small>PRODUCT NUMBER</small> <b>RWB16-12KR0**IB</b>		<small>SCALE</small> NONE											
<small>SIZE</small> <b>A4</b>		<small>SHEET</small> 1 OF 1											