

* NOTES * (UNLESS OTHERWISE SPECIFIED)

MECHANICAL

- ① HOUSING : THERMOPLASTIC LCP WITH 30% GLASS FILLED UL94V-0, COLOR BLACK
- ② CONTACT : PHOSPHOR BRONZE, SELECTIVE GOLD PLATED

SPECIFICATION

- ① CURRENT RATING : 1 AMPHRE MAXIMUM PER PIN
- ② VOLTAGE RATING : 30V MAXIMUM
- ③ CONTACT RESISTANCE : 50 MILLIOHMS MAXIMUM
- ④ INSULATION RESISTANCE : 1000 MEGOHMS MINIMUM
- ⑤ DIELECTRIC WITHSTAND VOLTAGE : 500V
- ⑥ OPERATING TEMPERATURE : -40°C TO +85°C
- ⑦ IR-REFLOW PEAK-TEMPERATURE : 260±5°C FOR 3 SECONDS
- ⑧ DURABILITY : 750 CYCLES MIN.

** THIS IS A RoHS 2011/65/EU COMPLIANT PRODUCT.
 ** MATES WITH PBTE* SERIES BATTERY PLUG CONNECTOR.

ORDER INFORMATION

RBTE1-11 ☒ R00 ☒ M3

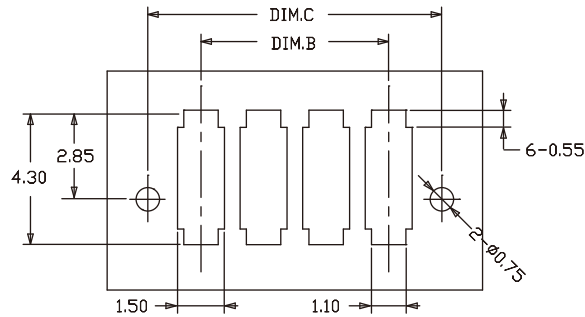
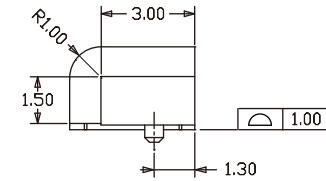
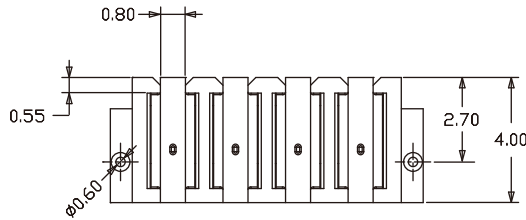
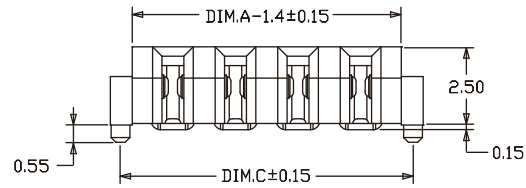
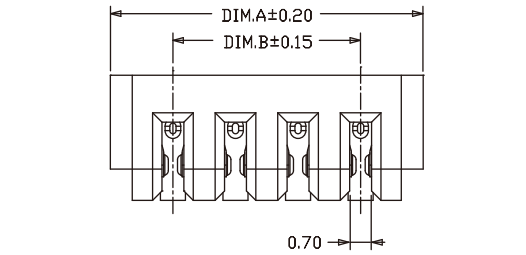
CIRCUIT NUMBER
 FROM 3 TO 8 PINS AVAILABLE

PLATING METHOD

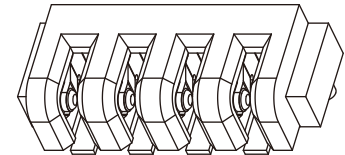
- 0~GOLD 0.2~1μ PLATED ON CONTACT AREA
- 1~GOLD 3μ PLATED ON CONTACT AREA
- 2~GOLD 6μ PLATED ON CONTACT AREA
- 4~GOLD 15μ PLATED ON CONTACT AREA
- 6~GOLD 30μ PLATED ON CONTACT AREA
-
- (GOLD 0.2~1μ UNDER-PLATED OVERALL)

DIMENSION TABLE

PART NUMBER	DIM.A	DIM.B	DIM.C
RBTE1-11×R003M3	8.00	4.00	7.35
RBTE1-11×R004M3	10.00	6.00	9.35
RBTE1-11×R005M3	12.00	8.00	11.35
RBTE1-11×R006M3	14.00	10.00	13.35
RBTE1-11×R007M3	16.00	12.00	15.35
RBTE1-11×R008M3	18.00	14.00	17.35



RECOMMENDED P.C.B. LAYOUT
 (TOP VIEW)
 TOLERANCE ±0.05mm



QUALITY CONTROL LINE DIMENSIONS SHALL MARKED THE SYMBOL AS	METRIC		WIROS ELECTRONICS INTERNATIONAL COMPANY LIMITED	
	DRAWER CHRISTINE		NOTICE OF PROPRIETARY PROPERTY THIS DRAWING CONTAINS INFORMATION THAT IS PROPRIETARY TO WIROS ELECTRONICS INTERNATIONAL COMPANY LIMITED AND SHOULD NOT BE USED WITHOUT WRITTEN CONSENT FROM WIROS.	
RoHS COMPLIANT	APPROVER D.J. M		DIMENSIONS ARE IN MILLIMETERS TOLERANCES	
	DIMENSIONS ARE IN MILLIMETERS TOLERANCES		TITLE 2.00 MINI-BLADE BATTERY RECEPTACLE SMD CONNECTOR	
HIF HYPO-CONTACT	DO NOT SCALE DRAWINGS		PRODUCT NUMBER RBTE1-11×R00×M3	
	THIRD ANGLE PROJECTION		SCALE NONE	
P/B LEAD-FREE	SIZE A4		SHEET 1 OF 1	
	REV.		SCALE NONE	